



SESWPS Drop Everything & Research December, 6 2024

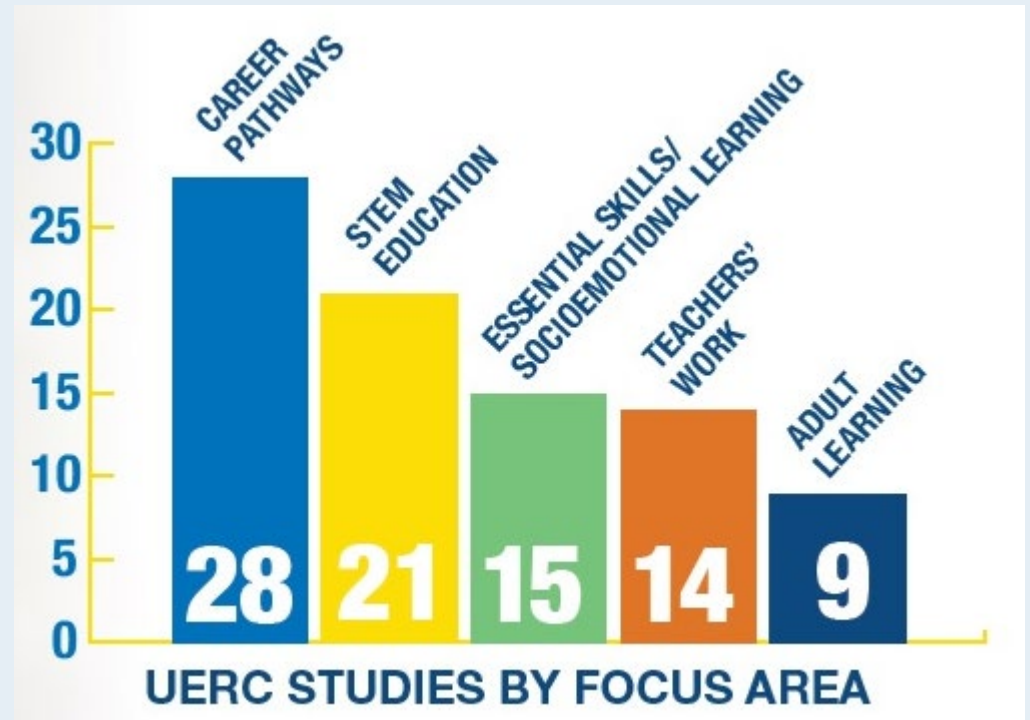
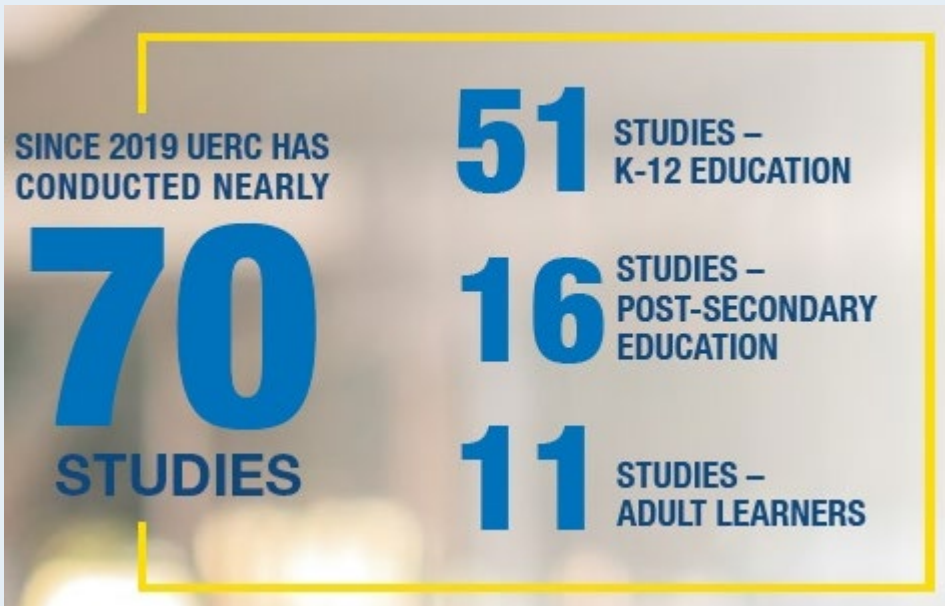


UERC website

<https://info.umkc.edu/uerc/>



Focus & reach



Areas of expertise



Design



Measurement



Data Collection



Analytics

- Quantitative & qualitative research
- Logic modeling
- Dashboards
- Understanding of local groups, intermediaries & ecosystem
- Grant evaluators



Please don't hesitate to reach out

Eric Camburn

camburne@umkc.edu

